



Newsletter

Issue 70 • October 2022

newsletter.lac20@gmail.com



A message from the editor...

I hope everyone coped ok with the extreme heat we had during July and August, lovely weather but something we're not used to or prepared for.

A committee meeting on 6 August discussed the criteria for 200 and 252 club, please see the article from Andrew with advice on what can be achieved, as a newcomer to the sport I will certainly be having a go at some of the distances to try and help me improve.

Just a reminder about registering with easy fundraising to raise funds to help your club, brief information is on page 3 and all details can be found in the last edition, issue 69.

Happy shooting,

Lyn

newsletter.lac20@gmail.com



- 1) 200 & 252 Club, Birthdays
- 2) New Club Records, lost arrows
- 3) Easyfundraising reminder, volunteers for kit move
- 4) Fran leaving, New Club Records
- 5) & 6) Fun Shoot, For Sale/Wanted
- 7) Last outdoor shoot results
- 8) Val Ward Trophy results
- 9) Club shirts
- 10) Guide to indoor rounds, field photo
- 11) L&RCAA Fox awards
- 12) AGB Tribute to the Queen

Birthdays in October
Cliff • Marc
John • Stuart

Birthdays in November
Rob • Anne • Gareth
Jaspal • Glynis • Callum

The 200 Club and 252 Club... how to improve your archery

The Club has these two systems to help less (and more) experienced archers make progress in archery.

Both are similar, in that they are a signed-off shoot of three dozen arrows at a single distance on a full-size target face. This means that they are less tiring than the formal Archery GB and World Archery rounds. As the names suggest, the objective is to achieve a score of 200 or 252 at each distance. This is for recurve bows with sights – lower or higher scores apply for the other bow styles. The 200 Club goes as far as 60 yards, and the 252 up to 100 yards.

When we shoot, our arrows fall within a circle with a certain spread, according to our skill. At 30 yards fewer of our arrows will be within this circle than at 20 yards, and so on. Neither our skill nor our spread of arrows is different, it is just that the target is “catching” fewer of them. So, to score that 200 or 252 at greater distances, we have to improve our skill to in order to shrink that spread. We can measure our progress by our score.

More experienced archers will give you advice if you ask, either on the field or in general chat in the Clubhouse. By challenging yourself to gain a fixed score as you move up the distances you will improve, and get the satisfaction of the achievement.



It's hard to explain the systems in detail in a few paragraphs, so if you have any query about them, please ask me at the field.

Andrew Kelly



Lost arrows

If you lose an arrow whilst at the field please remember to report this.

Please send the following details to:

secretary@lutterwortharchery.org.uk

- date and time of loss of arrow
- approximate location in the field
- arrow make and type
- colour of nock and fletchings



Well done Angela

This was Angela's 2nd session at the field, returning after a 4 years break from shooting.

Despite bouts of ill health in that time, she shot extremely well.

All credit to her, well done and keep up the good work.



200 & 252 CLUB ACHIEVEMENTS

ANGELA

200 club at 20yds
27 Aug - score 240

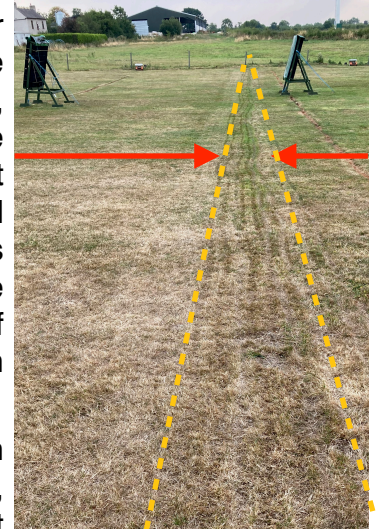
252 Club at 20 yards
17 Sept - score 208
(189 required)

Angela shot barebow on both occasions.

CAUTION when searching for lost arrows around the 50 yd and 60 yd targets at the field please

Please be careful when searching or digging for lost arrows between the 50yd (No 5) and 60yd (No 6) targets, this is where the tracking wires for the robot mowers are, they are buried just under the surface of the grass and split the field into 2 sections, the lines run from one side of the field to the other so one mower does the top half and the other one does the bottom half.

You should easily see the ridges in the grass where the wires are buried, so if you do dig to find arrows in that area you could break the wires, the mowers then won't know where their boundaries are and could easily head into each others area!



3 NEW CLUB RECORDS ACHIEVED DURING SATURDAY 13th AUG SHOOT

With temperatures rising to over 30 degrees, some members braved the conditions and shot the club competition on Saturday 13th August. An early start was in order to avoid the heat of the day but even so, the start had to be delayed slightly as the robots had other ideas.

A Windsor round (3 doz. at each of 3 distances) was shot by 5 members. Good scores were achieved despite the conditions with 3 members laying down new club records.

TERRY

Gents Barebow Windsor, 105 hits, 18 golds, score 588

CLIFF

Gents Compound Windsor, 107 hits, 63 golds, score 865

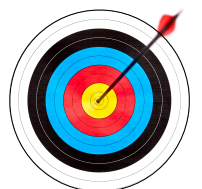
ANDREW

Gents American Flatbow Windsor, 73 hits, 6 golds, score 334.

PAUL (Gents Recurve) shot his first handicap qualifying round with a Windsor 40 achieving a score of 799 and completing the group was **MICK** (Gents Recurve) with a score of 820 on the Windsor round.

Everyone who took part shot a PB. All scores go towards the Val Ward Memorial Trophy at the end of the year.

WELL DONE TO EVERYONE WHO TOOK PART





<https://www.easyfundraising.org.uk/>

Do you shop online? You could help raise money for the Lutterworth Archery club.

Easyfundraising is the UK's biggest charity fundraising site. Lutterworth Archery Club is registered as a good cause that you can raise money for.

It's simple to use, and it's free.

easyfundraising turns your everyday online shopping into donations for your good cause, at no cost to you. Just visit your favourite retailers through the website and then shop as normal. Once you've made a purchase the retailer will then make a small donation to your cause to say "thank you".

You can buy everything online you would normally

3,500+ retailers include big names such as John Lewis, M&S, Boden, Expedia, Amazon, eBay, all the major supermarkets, holiday operators, insurance providers, plus a wide range of smaller and more niche online shops and stores.

To make a donation firstly, [register](#) and say who you want to support. The next time you want to buy something online, log into easyfundraising first and click on the retailer you want to shop with. You'll then be taken to their website where you can continue to make your purchase in the usual way. But – crucially – because you visited easyfundraising first, your cause will get a donation.

Find out more info at

<https://www.easyfundraising.org.uk/blog/how-does-easyfundraising-work-a-guide-for-shoppers/>

SAD NEWS

We unfortunately share with you the sad news received recently that our club member Trevor Simpkin passed away in July.

His daughter kindly contacted us to let us know.

Trevor had been bravely battling illness for sometime.

His enthusiasm and humour will be missed and we have sent our condolences to his family on behalf of our members.

Did you know?

Shafts of arrows were made from wood like ash, elm, willow, oak, cedar, or Sitka spruce.

Modern arrows are hollow and made of aluminum, fibreglass, graphite, or carbon fibre.

Arrowheads were made of flint, bone, horn, bronze, or hardwood while today we use steel.

NEW CLUB MEMBER

We have a new club member, please say 'hello and welcome' to **GEORGE PILKINGTON** senior recurve archer

TARGET PINS

During COVID restrictions, the club gave out target pins and faces to members.

As we get ready to move indoors again, it appears we have a shortage of target pins so, can we please ask, if you have any of the white target pins, can you please bring them back to the club.

Thank you



CLUB NEWS



COMMUNITY

Volunteers needed...can you help? Indoor shooting starts 8 October

The club is asking for volunteers to help move the kit from the field to the Lutterworth Sports Centre Hall on 8 October ready for indoor shooting.

Cliff will use his trailer to transport the kit so volunteers would be needed on 8 October at the field to load equipment from 12.30pm and at the Sports Hall from 1.00pm to unload and set up in readiness for the 1st indoor shoot of the season at 2.00pm, any help would be greatly appreciated, thank you.



Fran leaves to start a new life by the sea.



Fran started Archery in May 2006 and within 8 months of starting to shoot she attended her first ever indoor competition.

By 2009 she had attended regular competitions indoors and outdoors at neighbouring counties. She was asked to attend a trial for the county team (Warwickshire) which she succeeded in.

She took an almost 8 years break to pursue other sports such as skiing and sea kayaking, then decided to return to archery in 2017. Within a year of returning to archery she was attending more indoor and outdoor county competitions, indeed winning 2 gold medals in a single day for ladies outdoors Double National, achieving a 6 Gold end at 60 yards to boot at the Northants open championships.

She has also adopted the American Flatbow for instinctive archery and adapted very well to this.



Fran has now retired from work after 40 years of service in the NHS Trust.

She recently moved to the sea to pursue her love of water sports, swimming and the like.

She will soon be out searching for a new archery club. She has set up her own target boss in her garden to re-gain strength in her bow arm as she had recently broken it.

Wishing Fran the very best for the future in her retirement and her sporting pursuits.

Lutterworth Archery Club committee and members wish Fran a happy and healthy retirement.

252 CLUB ACHIEVEMENTS

Successes achieved in the 252 Club:

LYN

21st Aug 20yds

Barebow score 243 (189 required)

28 Aug 30yds

Barebow score 173 (169 required)

PAUL

30 Aug 20yds

Recurve score 308

26 Aug 30yds

Recurve score 276

30 Aug 40yds

Recurve score 256



**WELL DONE
TO BOTH ARCHERS**



MORE CLUB RECORDS AND ACHIEVEMENTS



TERRY

31 Aug - Gents Longbow American
75 hits, 12 golds, Score 369

CLIFF

3 Sept - Gents Compound American
90 hits, 51 golds, Score 726



CALLUM (Associate Member)

Callum is moving up to Scotland very shortly, his scores for this season are listed below.

9 tournaments, including the British Championships and British University Championships.

It's a long time since any member has been this busy, if at all.

He's also achieved some new records

10 April - Gents recurve Double York
score 1633, 280 hits, 49 golds

12 June - Gents recurve WA 900
score 1633

3 Sept - Gents recurve WA 1440
score 1201

4 Sept - Gents recurve Double WA 1440
score 2327

He has also achieved his Bowman classification

Well done to Callum, LAC committee and members would like to wish him all the best for the future

VERY WELL DONE TO ALL 3 ARCHERS



FUN SHOOT

A fun shoot took place at the field on Saturday 27 August. There was a good turnout with 11 archers attending, fun targets were set out with bosses at slightly different distances forward and back from the 20yd line, Charles looked like one of the targets as he was shuffling the boss into position!

Archers who joined in were split into 2 teams, the Strawberry team: Charles, Paul, Lyn, Martin and Alice and the Sunshine team: Sylvia, Luke, Meg, Sharon and Angela. Glynis set up and organised everyone and oversaw proceedings as our tournament organiser Mick's holiday flight changed which meant he could not attend. Glynis shot and split her score between the 2 teams to make it fair.



Charles on target!



Fun targets set out ready for the shoot



Best 'line cut' prize



Above: Team Strawberry

Below: Team Sunshine



Best 'miss' prize



We shot in pairs and moved along the 5 set out targets after each end. A prize was given for the best 'line cut' which went to both Charles and Paul. Another prize was given for the best 'miss' which went to both Meg and Alice.



It was a beautiful sunny day at the field, the fun shoot was lots of fun with tea and cake to end a brilliant day, well done to everyone who took part, and of course to the Strawberry team who won!



All 'geared up' and raring for the off



In line and on target



'I'm sure that's in!'



Team Strawberry - the winning team with their prize

COMING SOON

FOR SALE / WANTED

Do you have any archery kit you don't use any more and would like to sell or is there any kit you are looking to buy, someone may have just what you want?

Please send details and your contact info to Lyn at newsletter.lac20@gmail.com and it will appear in the next available newsletter.

Notice Board

Please check the website for any date or time changes of club competitions or notices.

Please do not move the targets at the field as they are set up for all to use.

Did you know?

An arrow can fly at 2.5 times faster than a cheater. An arrow released in competition flies 150 mph. The world's fastest cheetah maxes out at about 60 mph.

Ha Ha!!

How are archery contests usually won?
By an arrow margin!

Why did Robin Hood steal from the rich?
Because the poor didn't have anything worth stealing!

Did you hear about the time Orion lost an Archery match?
He was given a constellation prize!



LAST CLUB SHOOT OF THE OUTDOOR SEASON 2022



SATURDAY 24TH SEPTEMBER

Saturday saw the last outdoor shoot of the season. It was a dry day, 8 archers shot a Warwick round and other archers just shot and chatted, it was a good turnout and nice to see a busy field. Everyone did well and tea and biscuits after the round while scores were being sorted was very welcome. Well done to everyone who did the round.

Lutterworth Archery Club Competition

Date: 24 September 2022 • Round: Warwick

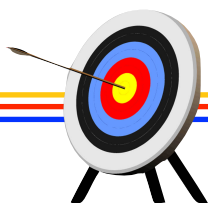
Round Variation Shot	Archer	Bow Style	Current H/C	Pure Score	Class	Allowance for round	H/C Adjusted Score
Warwick	Mick	RC	40	354	2	1080	1434
Warwick	Cliff	COMP	36	376	2	1062	1438
Warwick 30	Sylvia	LB	81	245	2	1412	1657
Warwick 30	Lyn	BB	-	261	-	-	-
Warwick 30	Angela	BB	69	127	2	1334	1461
Warwick	Andrew	LB	61	139	2	1250	1389
Warwick	Shane	RC	40	308	2	1080	1388
Warwick	Callum	RC	30	398	2	1041	1439



Getting set up
and ready for the shoot



Enjoying tea and a chat in the cabin while the
score sheets are finalised





Val Ward Handicap Trophy Results

scores at 24 September 2022



Rounds Shot	Archer	Cumulative score	Position	Average
5	Mick	7110	1	1422
5	Andrew	6973	2	1395
4	Terry	5792	3	1448
4	Cliff	5741	4	1435
3	Callum	4209	5	1403
2	Sylvia	2962	6	1481
2	Shane	2897	7	1449
1	Glynis	1453	8	1453
1	Fran	1435	9	1435
1	Angela	1246	10	1246

FORTHCOMING EVENTS

For your diary, here are some forthcoming shoots you may be interested in:

Sunday 16th October - Warwickshire WA Field.

Saturday 22nd October - EMAS inter-counties Clout, Derbyshire

Sunday 13th November - Foxes Portsmouth

Sunday 11th December - Foxes Worcester

Both the Foxes shoots are part of the Countesthorpe Triple competition, the third round is yet to be arranged.

The details and entry forms for all the above are on the county website at <https://www.lrcaa.org/calendar>





CLUB SHIRT ORDER

Lutterworth v3.0b-1



COMMUNITY



Shirt Material: Coolmax 165 gm polyester, moisture management waffle texture fabric. Comfortable to wear in hot weather allowing moisture to wick off of skin and pass through the fabric.

Following requests from members, Mick is putting together another order for club shirts.

The shirts are manufactured by Lionhart Custom Design Archery Shirts to be comfortable both in warm and cool weather. Several archery clubs are now using shirts manufactured by this company.

They come in a variety of sizes and fittings. **Please note**, the sizes quoted are the size of the shirt so when deciding which one is right for you, you are advised to measure one of your existing garments and not your body.

Our design will be manufactured with 2 different neck lines for you to choose from. There is also an option to have your name on the back, at no additional charge.

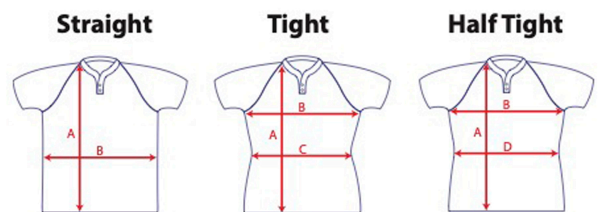
Sizes and fittings are shown on the order form.

An email has been sent out to all members with details and a pdf version of the order form attached, you can also pick an order form up directly from Mick

The cost of the shirts are £34 which includes delivery.

To order your shirt, please complete the order form clearly and e-mail it to micksarchery19@gmail.com. (you may have to print it off then scan or photograph the completed form if you can't edit the pdf version) or hand it to Mick

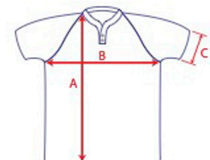
Payment is required in advance. Please make your payment by BACS to the club account, details are on the order form. Once payment has been received the order will be confirmed.



Units: CM

	XXS	XS	S	M	L	XL	2XL	3XL	4XL	5XL
A	66.0	68.5	71.0	73.5	76.0	78.5	81.0	83.5	86.0	89.0
B	45.0	47.5	50.0	52.5	55.0	57.5	60.0	62.5	65.0	67.5
C	36.0	38.0	40.0	42.0	44.0	46.0	48.0	50.0	52.0	54.0
D	39.0	41.0	43.0	45.0	47.0	49.0	51.0	53.0	55.0	57.0

DIMENSIONS ARE GARMENT SIZES
For equivalent chest or waist sizes please double measurements shown
TOLERANCE = +/- 1 cm,
if in doubt order one size larger



Units: CM **Kids Size**

	6	8	10	12	14
A	59.0	61.0	63.0	65.5	68.0
B	42.0	44.0	46.0	48.0	50.0
C	13.0	14.0	15.0	16.0	17.0



Collar Options



Lionhart



Zipped Placket



GUIDE TO INDOOR ROUNDS



DISTANCE	18m	18m	20yds	20yds	20yds	25yds	Additional Rules	Comments
FACE SIZE	40cm Special	40cm	40cm	60cm	16" Black Special	60cm		
PORTSMOUTH				5 Doz			Compound = triple face	
WORCESTER					5 Doz		Compound = 5 spot	5 arrow ends
BRAY I			2 1/2 Doz				Compound = triple face	
BRAY II						2 1/2 Doz	Compound = triple face	
VEGAS	5 Doz							
WA 18		5 Doz					Compound = triple face	
WA 25						5 Doz	Compound = triple face	

Beautiful view over the field at sunset

photo courtesy of Shane





L&RCAA FOX AWARD

The 'Leicestershire & Rutland Fox Award' has been designed to provide archers of all ages (Junior & Senior), who are not yet shooting scores high enough to achieve WA or Rose Awards, an incentive to improve their archery skills.

The Fox Award is open to all L&RCAA archers and comprises a royal blue fox hanger with 6 coloured bars. The coloured bars indicate increased proficiency and are white, black, blue, red, gold & purple.

Each coloured bar can be claimed once an archer achieves the minimum score for the round being shot (shown in the table below) in accordance with their bow style, age group & gender. If unsure please see the 'Juniors Round Guide' on the L&RCAA website or refer to AGB Rules of Shooting 'Recognised Rounds' 308.

The fox hanger is provided free when archers claim their first bar. Coloured bars cost £2.00 each. Bars must be claimed in date and colour order, with only one bar being issued per score shot.

All enquiries about the Fox Award Scheme should be addressed to:- Carol Smith
L&RCAA County Records Officer
✉ records@lrcaa.org

Bow Style	White	Black	Blue	Red	Gold	Purple	Round
Longbow	40	60	90	105			Warwicks
	45	65	95	110			Long Metrics
	60	85	125	150			Nationals
	85	115	180	205			Westerns
	95	125	190	220	250	300	York/Hereford/Bristols
	150	175	225	275	325	400	WA 1440/Metrics
Barebow	65	105	125	175			Warwicks
	70	110	130	185			Long Metrics
	120	150	190	250			Nationals
	150	215	260	335			Westerns
	170	230	270	350	400	550	York/Hereford/Bristols
	225	275	325	400	550	675	WA 1440/Metrics
Recurve	160	200	250	300			Warwicks
	175	225	300	380			Long Metrics
	250	300	375	440			Nationals
	325	400	500	600			Westerns
	350	445	550	725	825	975	York/Hereford/Bristols
	400	550	675	825	950	1075	WA 1440/Metrics
Compound	250	300	340	365			Warwicks
	300	400	475	525			Long Metrics
	375	450	500	545			Nationals
	500	600	680	730			Westerns
	550	760	885	995	1050	1150	York/Hereford/Bristols
	675	825	950	1075	1150	1225	WA 1440/Metrics

**Score sheets are required to be attached to any claim so members will have to obtain a copy from Andrew unless they have a copy themselves.



A copy of these forms is on the county website
<https://www.lrcaa.org/assets/downloads/documents/doc-FoxAward.pdf>





A touching tribute from
Archery GB whose sentiments
are widely echoed by



Lutterworth Archery Club committee and members



Her Majesty Queen Elizabeth II (1926-2022)

September 9th 2022

It is with great sadness that we join the Royal Family in the mourning of Her Majesty Queen Elizabeth II.

As Patron of the British Olympic Association, her support for the Olympic Movement in this country and, in particular, the London 2012 Olympic Games cannot be underestimated and shall never be forgotten.

Graham Potts, The Royal Toxophilite President said, "It is with great sadness that the Royal Toxophilite Society has received news of the death of our Patron, Her Majesty, Queen Elizabeth II.

"With Royal Patronage since 1787, Her Majesty has been the Society's longest-serving Patron, and earlier this year we were proud to recognise her Platinum Jubilee as Sovereign at our celebrations with a small canopy of trees dedicated in her name.

"Our thoughts and prayers are with all of the Royal Family to whom Her Majesty was not only Queen but also a mother, grandmother and great grandmother, at this very sad time."

Neil Armitage, CEO of Archery GB, said: "Archery GB extends its sincerest condolences to all of the Royal Family on the passing of Her Majesty the Queen, patron of the British Olympic Association and Royal Toxophilite Society. Her exceptional support of the country's and the Commonwealth's sporting pursuits, including archery, has meant so much to so many and will be greatly missed but always appreciated."